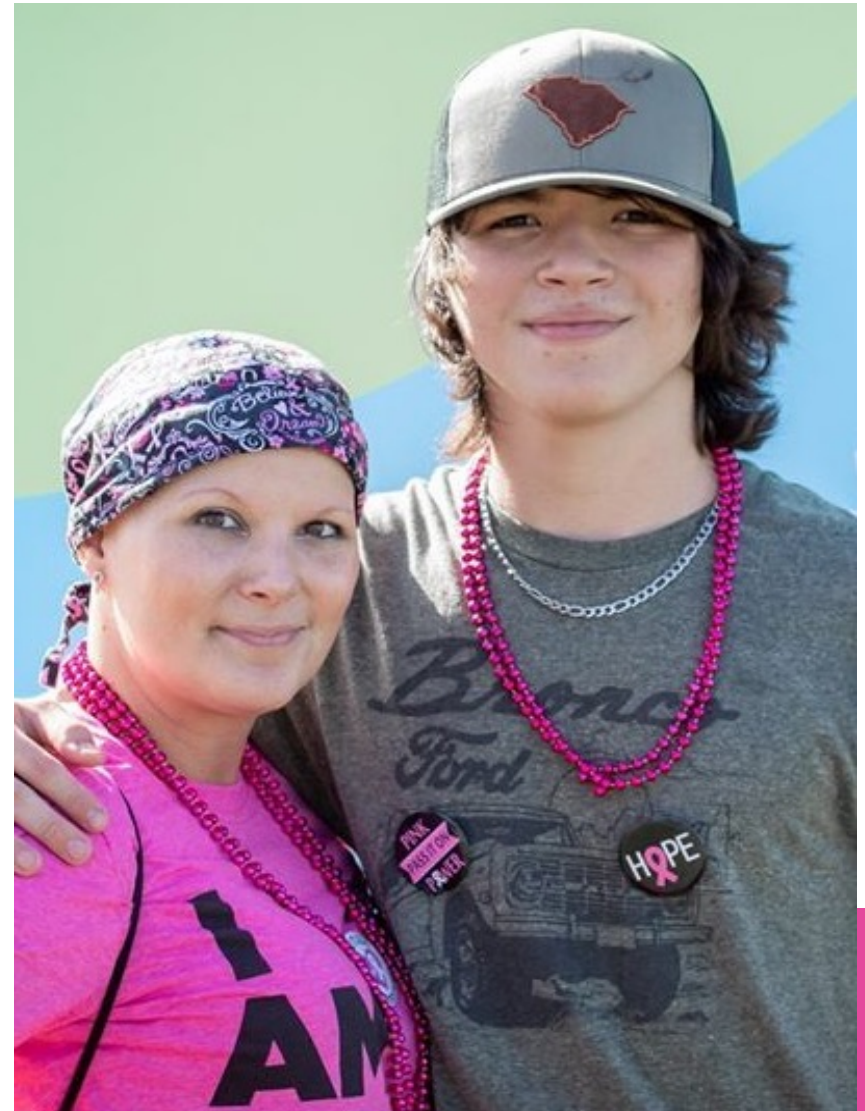


# Breast Cancer Is a Social Imperative

- The **most significant risk factors** for breast cancer are being a woman and getting older.
- **Every 12 minutes**, one woman in the U.S. will lose her life to breast cancer.
- Black women in the U.S. die from breast cancer **about 40% more** than Caucasian women.
- Breast cancer **is the leading cause** of cancer deaths for all Hispanic women in the U.S.
- Breast cancer treatment can **cause financial strain** that forces patients to choose between their health and other needs.



# Pandemic Impact on Breast Cancer



2021



Breast Cancer Patients will have limited new treatment options to because of shuttered research labs.



Decreased clinical trials will be devastating for the metastatic breast cancer community who rely on new therapies.



Hiring freezes will limit the number of new breast cancer doctors and scientists.



Demand increased for real-time patient education, and financial assistance in order to maintain treatments.



\*Patient outcomes will decrease as millions delay mammograms and critical early detection tests.

\*National Cancer Institute estimates that an additional 10,000 deaths from breast cancer over the next 10 years.

# Komen Pandemic Response

2021



Maintained investment in 200 research grants and 40 clinical trials, even though funding decreased overall.



Invested in creating additional real-time resources for patients and expanding programming to reduce health inequities.



Strategically deployed resources to ensure that where you live did not impact whether you live.



Expanded the financial assistance program to help bridge the gap many patients experience while in treatment.