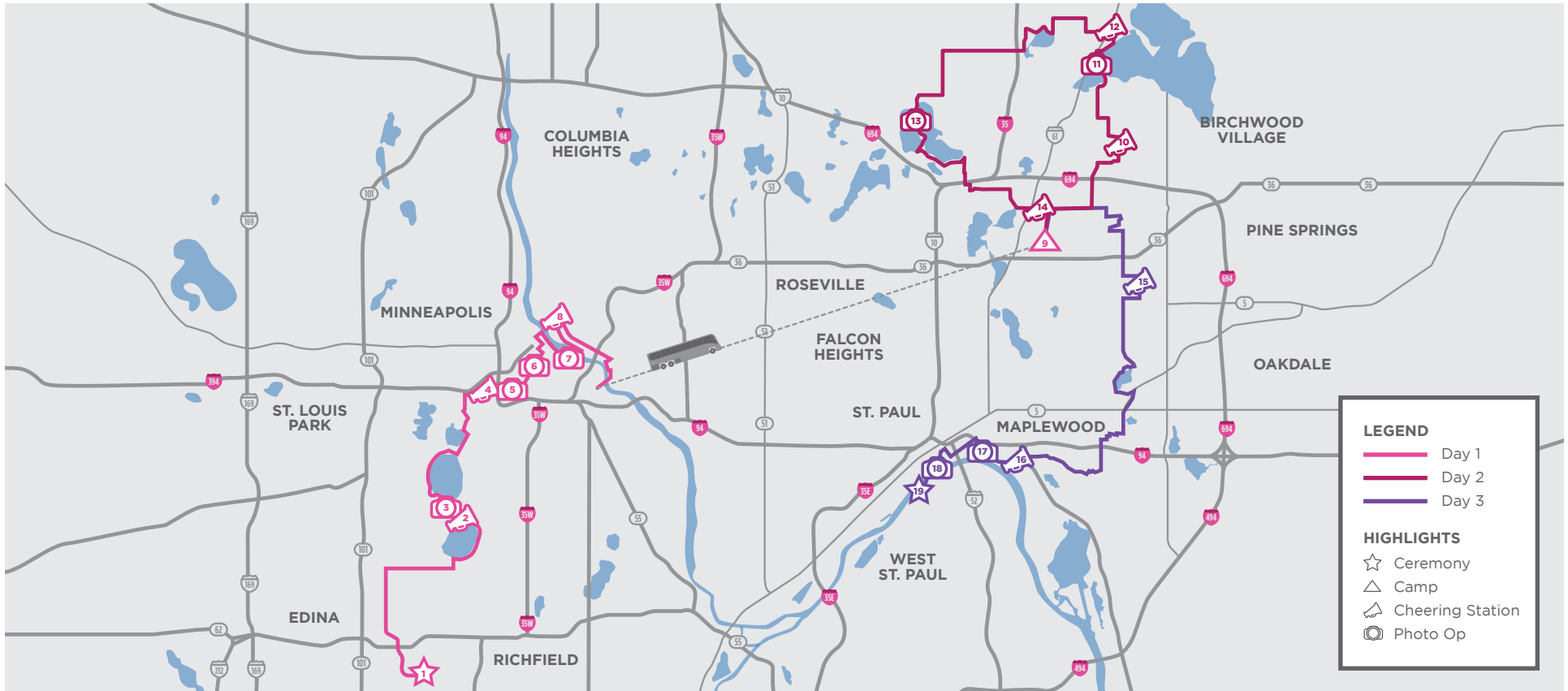


# SUSAN G. KOMEN TWIN CITIES 3-DAY

## 2018 JOURNEY MAP



**LEGEND**

- Day 1
- Day 2
- Day 3

**HIGHLIGHTS**

- ☆ Ceremony
- △ Camp
- 📍 Cheering Station
- 📷 Photo Op

- 1. Opening Ceremony** ☆  
Friday, August 17 at 7:00 a.m.  
Southdale Mall  
300 Southdale Center  
Edina, MN 55435
- 2. Lake Harriet Band Shell** 📍  
Cheering Station | Mile 6.6  
Open 8:50-10:50 a.m.  
4135 West Lake Harriet Parkway  
Minneapolis, MN 55409
- 3. Lake Harriet Band Shell** 📷  
Photo Op | Mile 6.6
- 4. Parade Ice Garden Parking Lot** 📍  
Cheering Station | Mile 11.4  
Open 10:15 a.m.-1:35 p.m.  
600 Kenwood Parkway  
Minneapolis, MN 55403

- 5. Minneapolis Sculpture Garden** 📷  
Photo Op | Mile 11.6
- 6. Mary Tyler Moore Statue** 📷  
Photo Op | Mile 12.9
- 7. Stone Arch Bridge/ Mississippi River** 📷  
Photo Op | Mile 14.9
- 8. B.F. Nelson Park** 📍  
Cheering Station | Mile 16.4  
Open 11:40 a.m.-4:25 p.m.  
434 Main Street NE  
Minneapolis, MN 55413

- 9. Camp** △  
Opens 1:00 p.m. on Friday  
Opens 12:00 p.m. on Saturday  
Harvest Park  
2561 Barclay Street  
Maplewood, MN 55109
- 10. White Bear Lake Area High School** 📍  
Cheering Station | Mile 3.8  
Open 7:30-9:00 a.m.  
3551 McKnight Road N  
White Bear Lake, MN 55110
- 11. White Bear Harbor** 📷  
Photo Op | Mile 6.4
- 12. Railroad Park** 📍  
Cheering Station | Mile 7.3  
Open 8:35-11:00 a.m.  
4752 Highway 61 N  
White Bear Lake, MN 55110

- 13. Vadnais Lake** 📷  
Photo Op | Mile 14.6
- 14. Costco** 📍  
Cheering Station | Mile 19.8  
Open 11:40 a.m.-6:00 p.m.  
1431 Beam Avenue  
Maplewood, MN 55109
- 15. Northwood Park** 📍  
Cheering Station | Mile 5.5  
Open 8:35-9:50 a.m.  
2006 1st Street N  
St. Paul, MN 55109
- 16. Indian Mounds Park** 📍  
Cheering Station | Mile 13.5  
Open 10:50 a.m.-2:15 p.m.  
1113 Mounds Blvd.  
St. Paul, MN 55106

- 17. Indian Mounds Park** 📷  
Photo Op | Mile 14.3
- 18. Wabasha Street Bridge** 📷  
Photo Op | Mile 16.2
- 19. Closing Ceremony** ☆  
Sunday, August 19 at 4:30 p.m.  
Harriet Island  
200 Dr. Justus Ohage Blvd.  
St. Paul, MN 55107

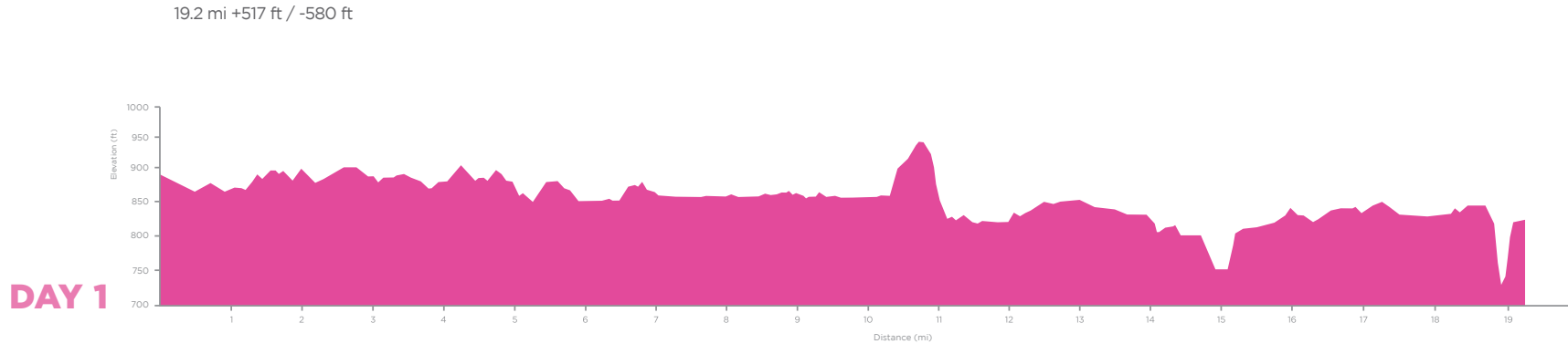
Share your 3-Day pics and videos with us.

- Facebook: The3Day
- Twitter: @The3Day
- Instagram: @Komen3Day
- Pinterest: The3Day
- YouTube: @Komen3Day

# SUSAN G. KOMEN TWIN CITIES 3-DAY 2018 ELEVATION



These graphs show the elevation for all three days, to give you an idea of when to expect uphill and downhill walking.

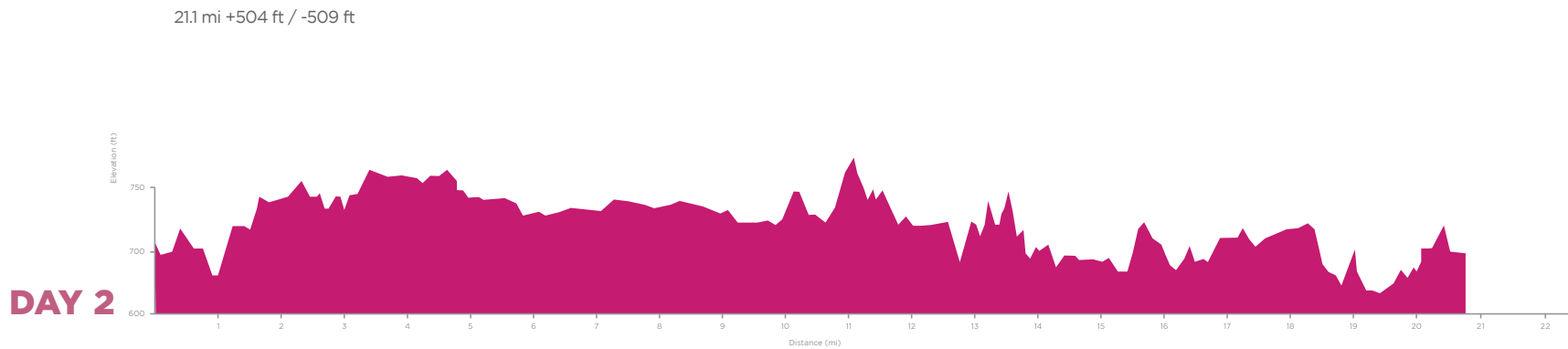


**ROUTE HOURS\***

**Total Mileage**  
19.2 Miles

**Route Operational Hours**  
7:50 a.m.–6:00 p.m.

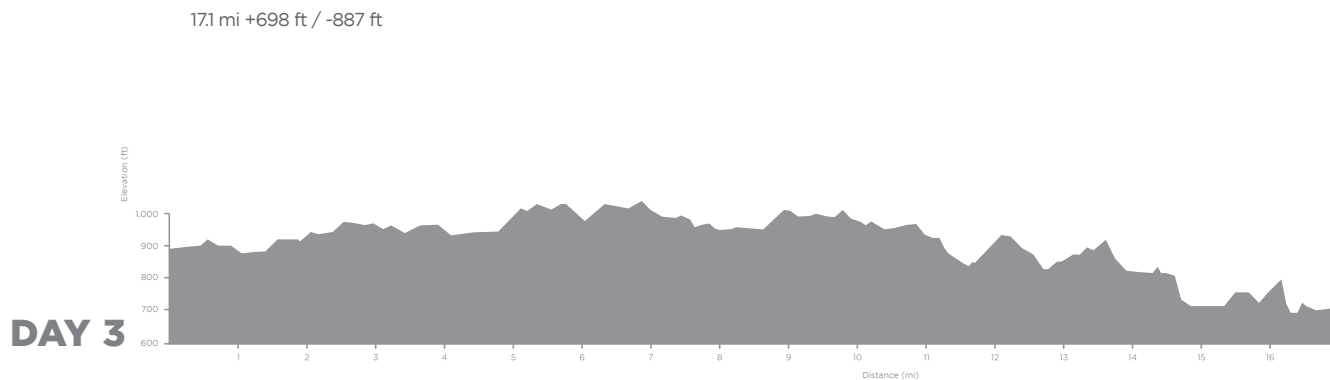
**Total Hours to Complete Route**  
10 hours, 10 minutes



**Total Mileage**  
21.1 Miles

**Route Operational Hours**  
6:30 a.m.–7:00 p.m.

**Total Hours to Complete Route**  
12 hours, 30 minutes



**Total Mileage**  
17.1 Miles

**Route Operational Hours**  
7:00 a.m.–4:00 p.m.

**Total Hours to Complete Route**  
9 hours

\*The amount of daylight hours impacts the total event mileage as it dictates the amount of time the route can be kept open safely.